

Chapter Four PC Instructions

1、install software

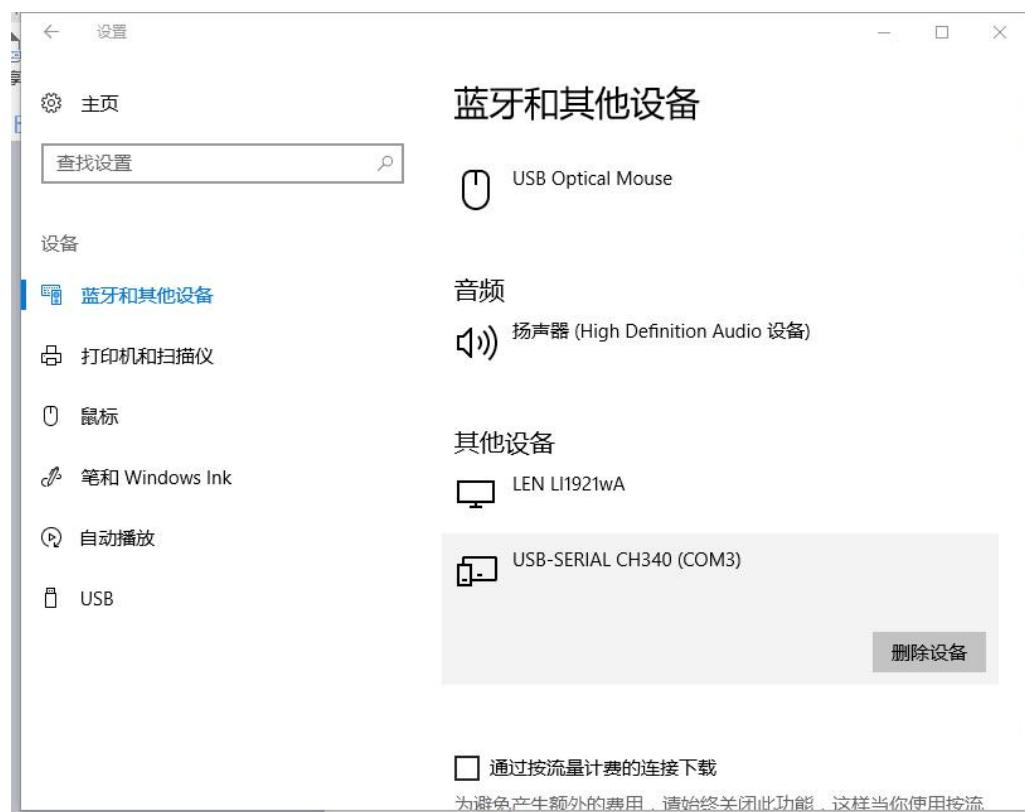
Step 1: Install the runtime software visa540_runtime.exe

Step 2: Install CH341SER the SETUP.exe serial to USB drivers

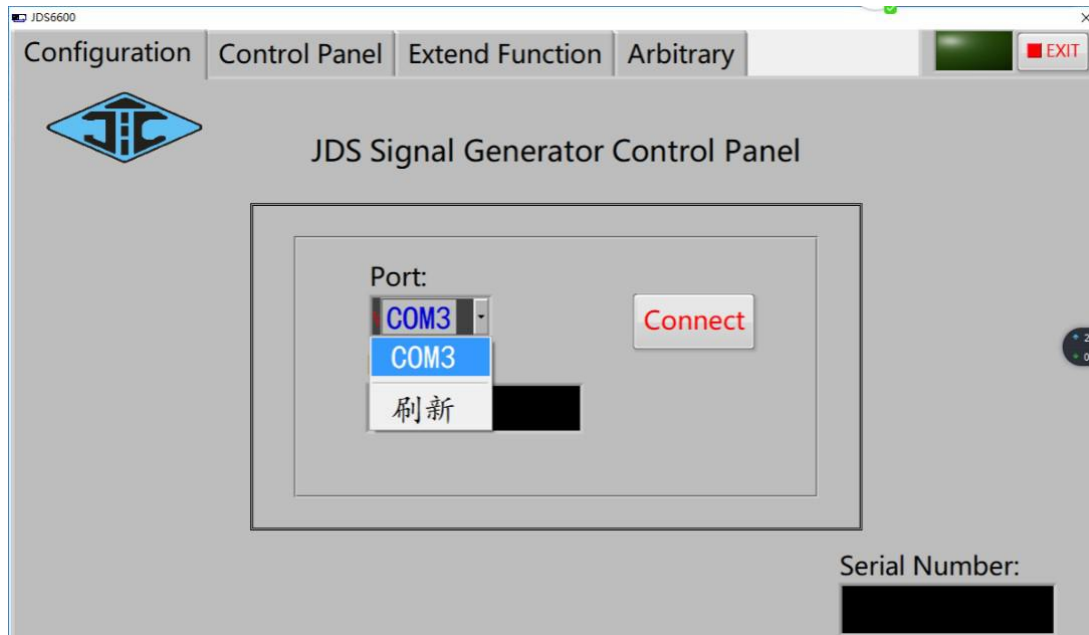
Step 3: Install signal generator .exe program

2, online

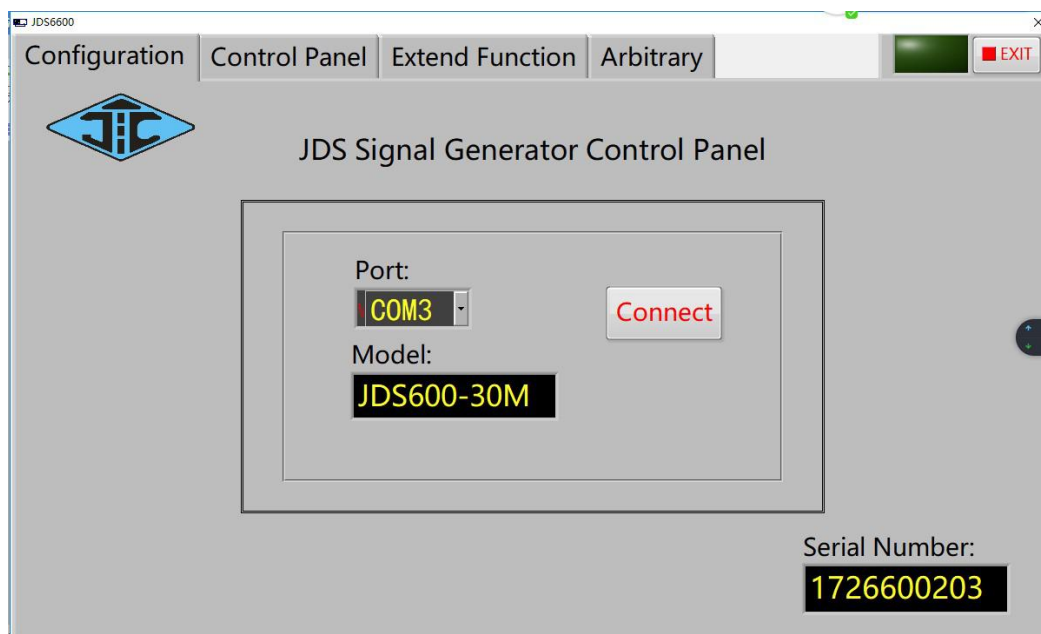
Step 1: right-click on the computer - property - device manager -
computer distribution by serial port



Step 2: choose the corresponding point on line after a serial
port

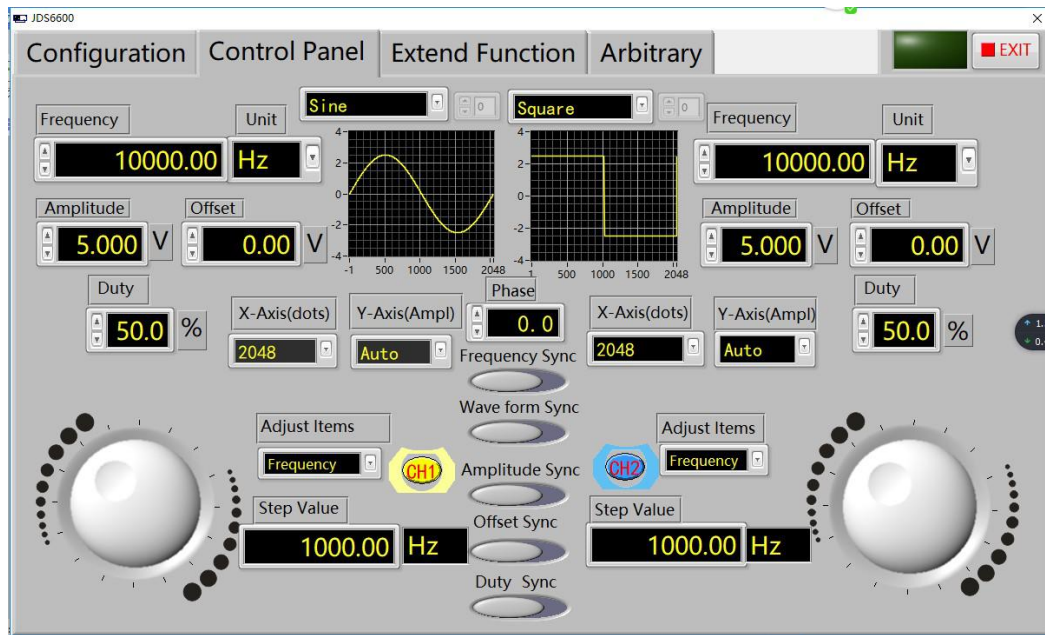


Step 3: online success

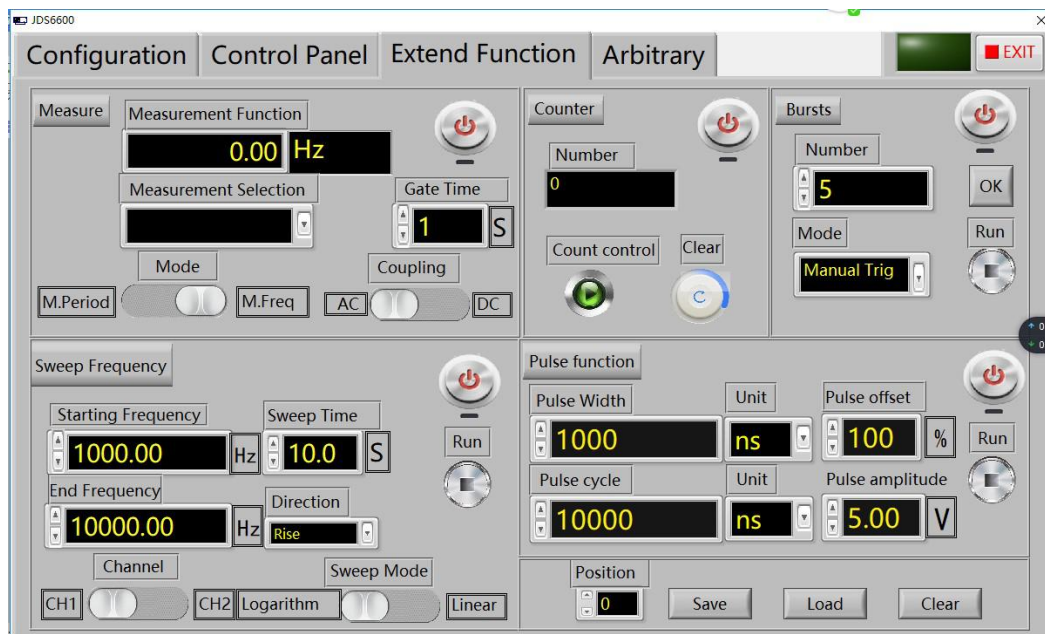


1: standard output waveform

(1) the control signal output normal function, display boxes can real-time display current output waveform;



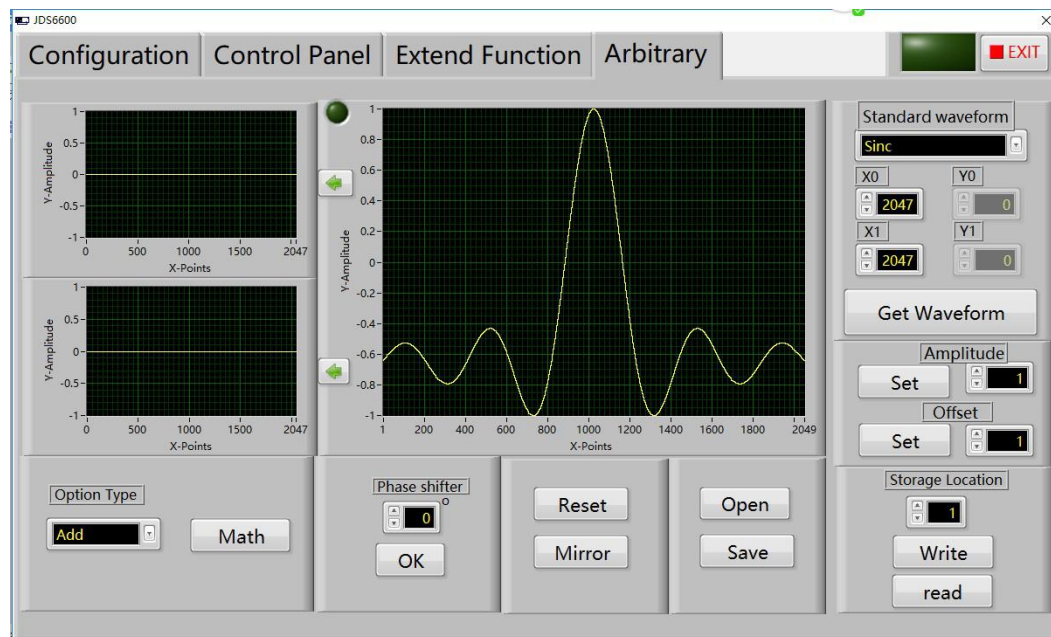
(2) measure the external signal function, can also be precise control of pulse width and cycle;



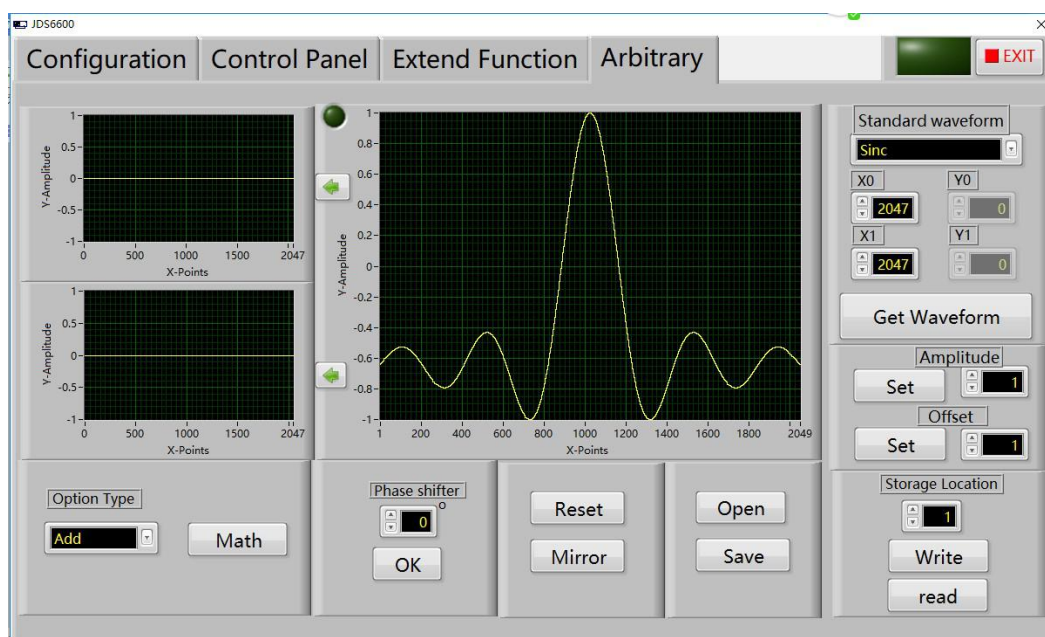
(3) connect the upper machine, switch to expand page, can control the output arbitrary waveform,

We have some regular arbitrary wave, default of the currently selected is

the medical pulse wave;

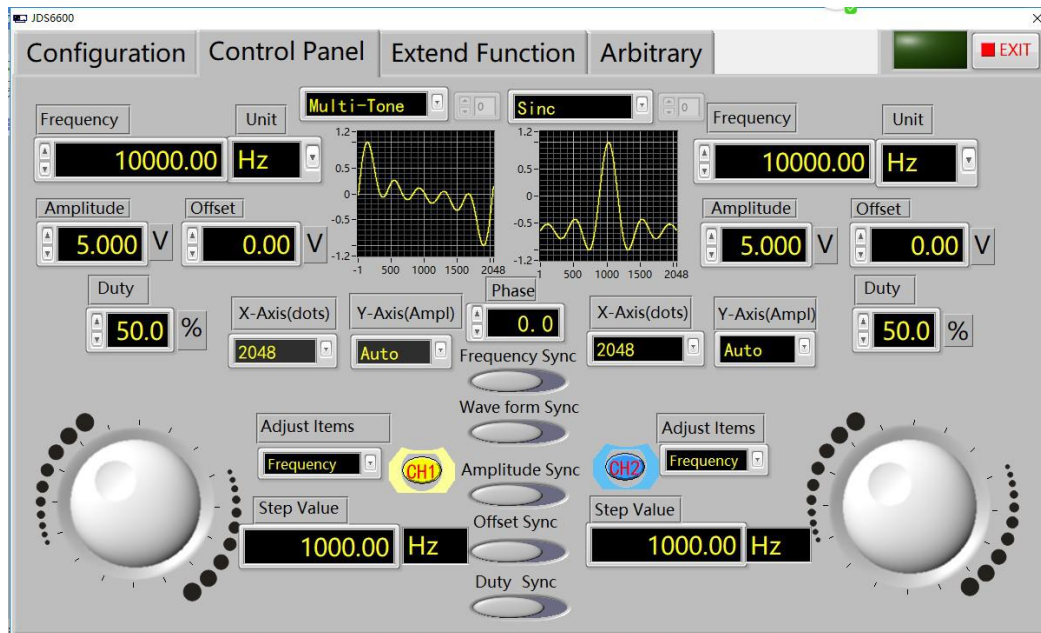


(4) keep the location choice, this series of machine with 0-15 waveform save location, select position 1 here, and then click on "write"; Blue bar said written progress;



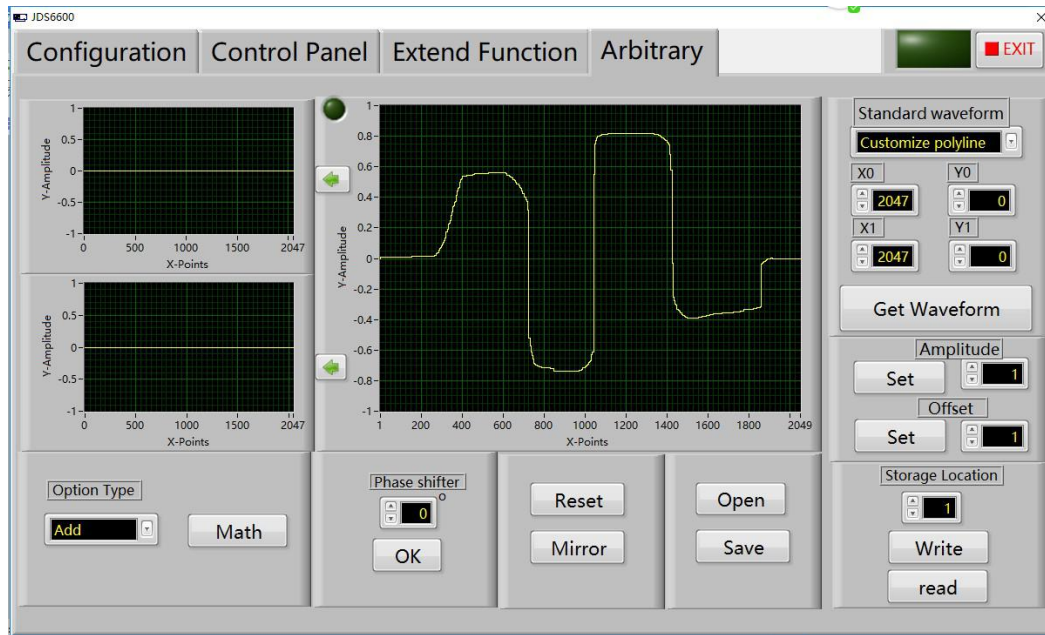
(5) after the completion of the write CH1 channel Arb1 v, the signal

control page below:

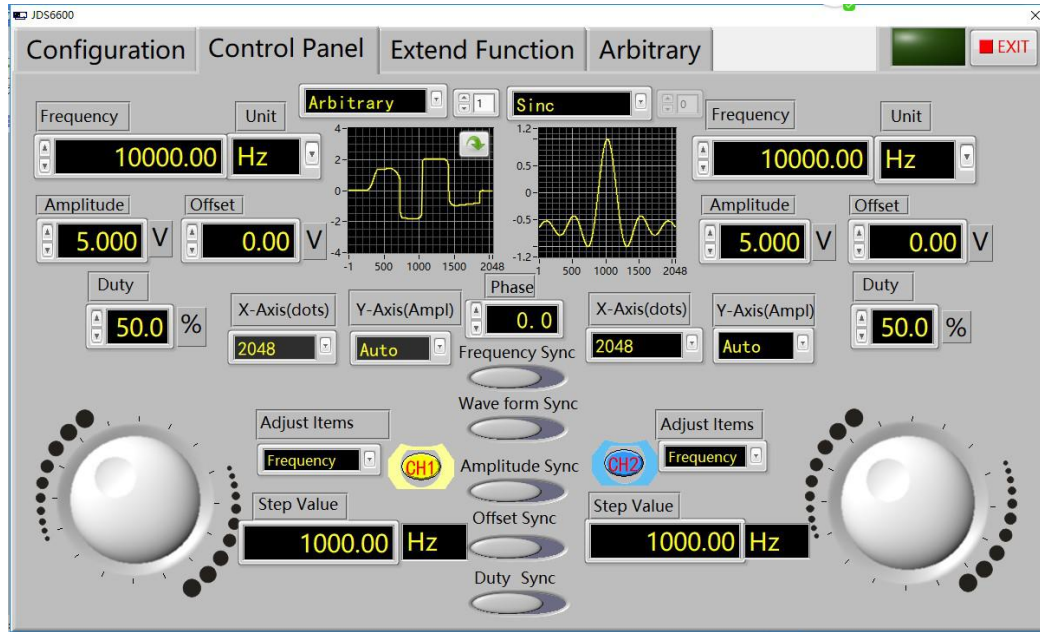


2: hand-painted arbitrary wave

- (1) the upper machine and machine good connection, ensure the normal order of the communication between machine and computer.
- (2) the software switch to expand the function pages, and then move the mouse to waveform display area, and then press the left mouse button to start drawing, release the left mouse button to stop drawing.

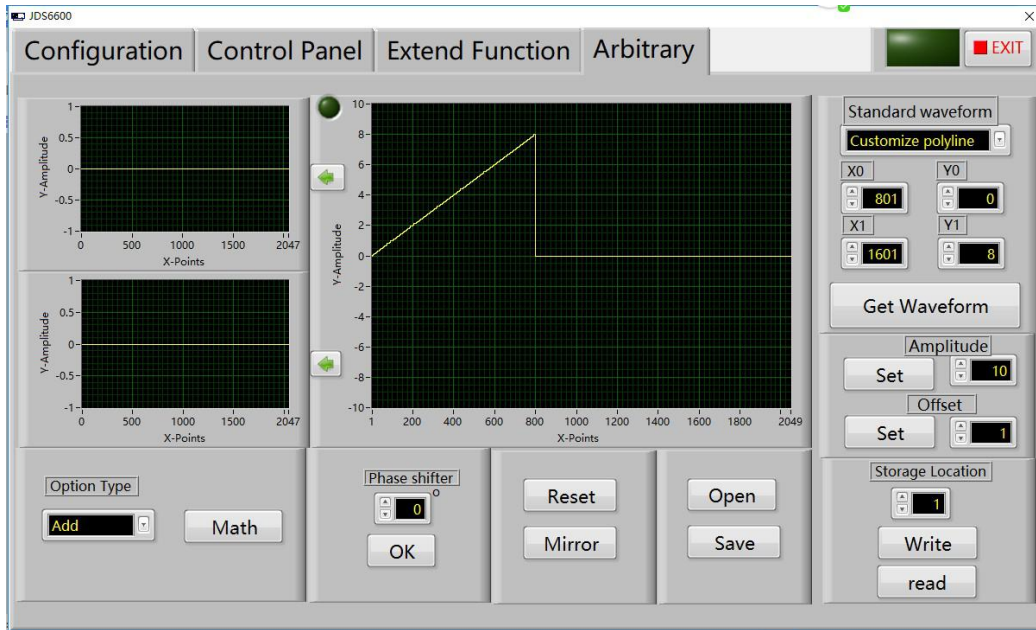


(3) to save the location of the waveform in the corresponding position, and then signal control page will bring up the map the location of the waveform in the preservation of the.

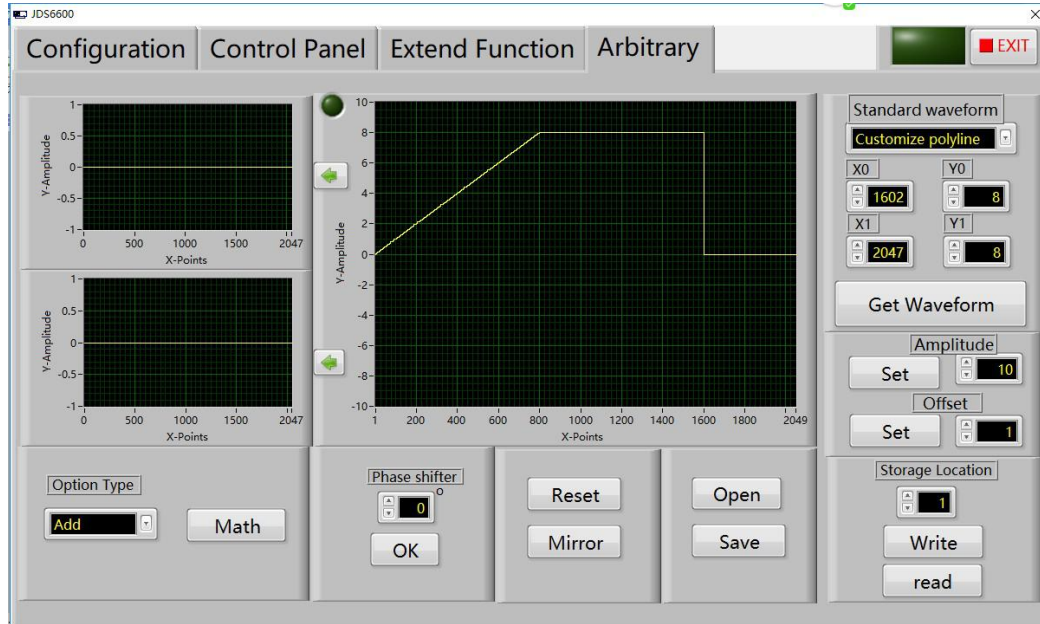


3: Hand draw a trapezoidal wave

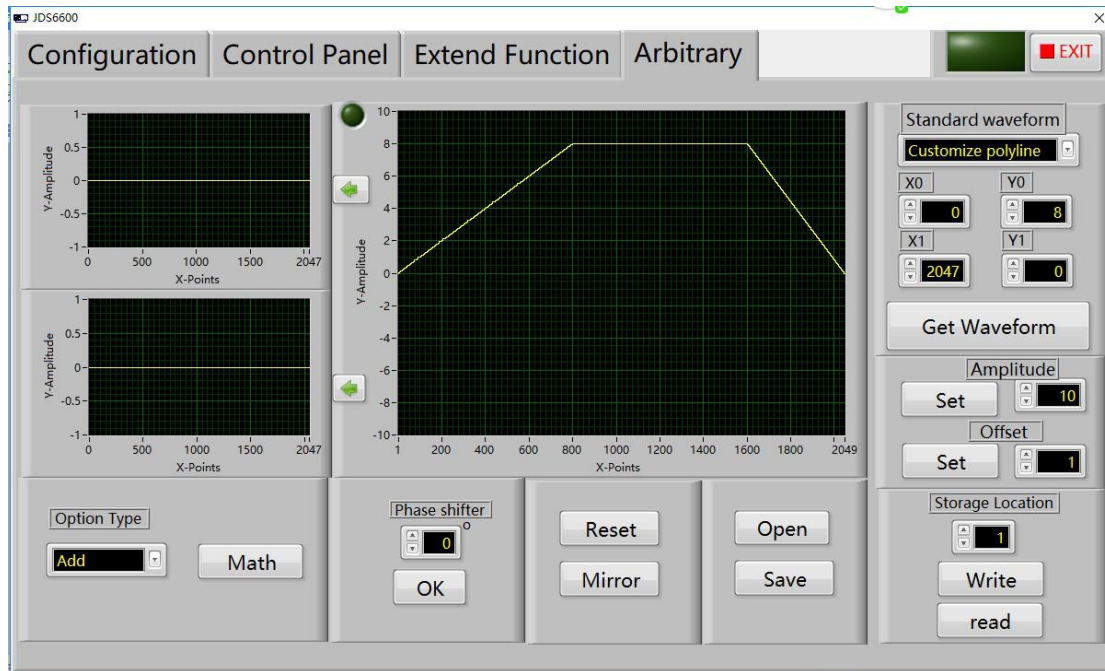
- (1) The upper machine and machine good connection, ensure the normal order of the communication between machine and computer.
- (2) Hand-painted trapezoidal in standard waveforms when choosing a straight line;
- (3) Set the starting point for 0, termination point 800; The starting range 0, terminate the magnitude 8
- (4) Click on the generated waveform generated waveform as follows:



(5) In setting up starting point, end points, 800, 1601; Starting magnitude 8, termination of magnitude 8, then click the generated waveform, generated waveform is as follows:



(6) In setting up starting point, end points, 1602, 2047; Starting magnitude 8, termination by 0, and then click the generated waveform, forming waveform as shown:



(7) Then put the waveform is saved in the corresponding position, and then signal control page will bring up the map the location of the waveform in the preservation of the.

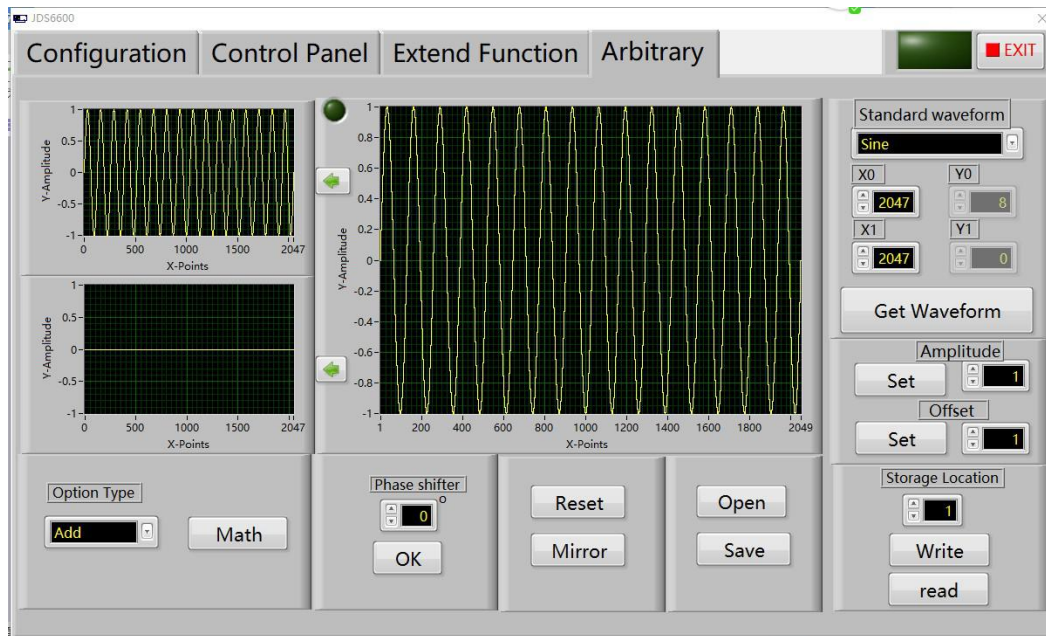
This is the way how to draw a trapezoidal wave, one instance, in this way can draw other types of waveforms.

4. Draw a amplitude modulation waveform

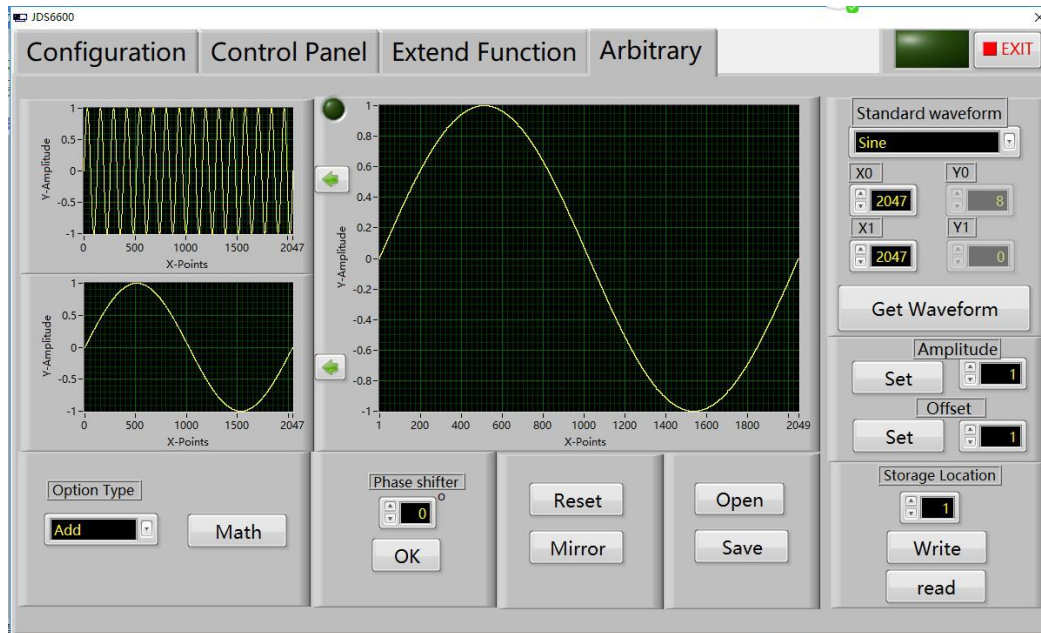
(1) The upper machine and machine good connection, ensure the

normal order of the communication between machine and computer.

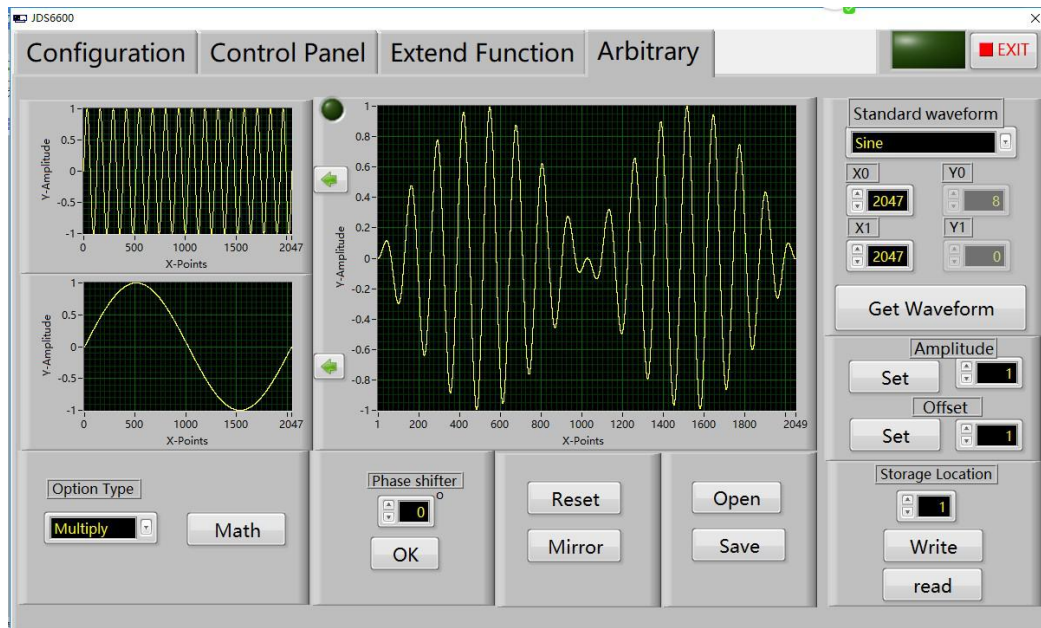
(2) In the standard waveform selection box choose sine wave, the starting point for writing 0; End point written 80, and then click the generated waveform button in a row, and then click the green arrow to the right form waveform as shown:



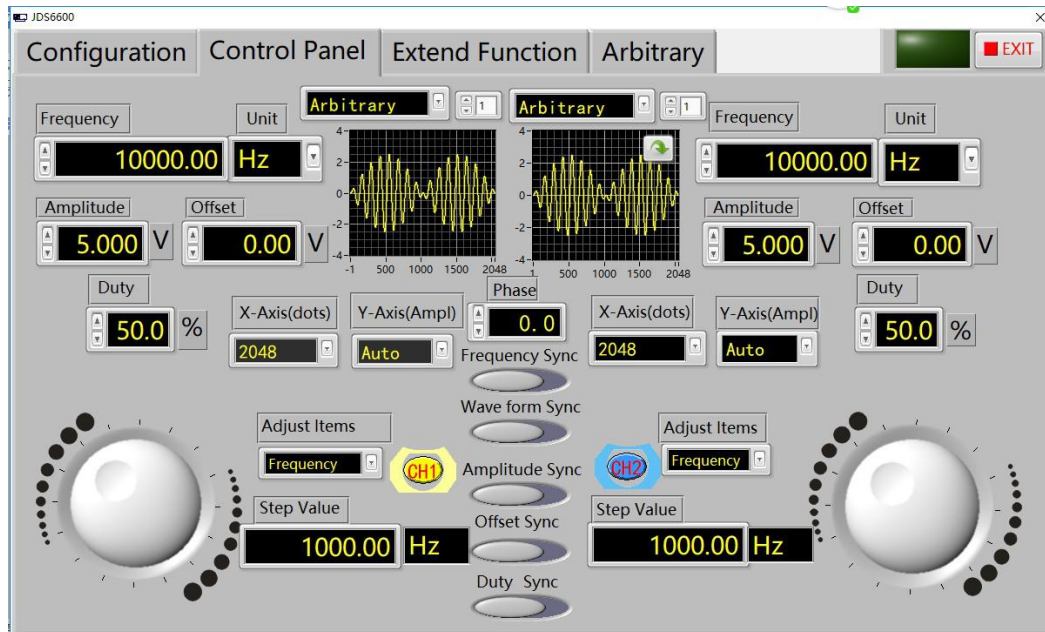
(3) Set the starting point 0; End point 2048, and then click "generate the waveform" button. Click the green arrow to the right generated waveform as shown:



(4) Select operation type product, and then click operation button, generates the amplitude modulation waveform.



(5) Then to save the location of the waveform on 01 location, and then will draw waveform signal control page in the preservation of 01 out of position.



Care and maintenance

1. Make sure the input power adapter correctly, the machine uses DC5V power adapter;
- 2, the instrument display on the LCD module is fragile, perishable items, please do not slam and near chemicals to prevent corrosion. When you feel the liquid surface dust and dirt, wipe with a soft cloth carefully.
- 3, the working temperature of $-10 \sim 50^{\circ}\text{C}$, Storage temperature $-20 \sim 70^{\circ}\text{C}$, and the instrument in a dry environment.
4. Do not attempt to disassemble the equipment, destroy the package will void the warranty. The instrument is there are no user-serviceable parts, repairs may only repair outlets or by specifying the return factory.
- 5, avoid lighted candles, a water cup, corrosive chemicals and other unsafe items

placed on the surface of the instrument, so as not to cause damage to the instrument.

6, the display screen are easy to pollution, fragile device, do not touch the hand as well as external and collision, avoid children play this instrument.

7. Do not move the instrument to avoid severe irreparable damage to the internal circuit when the instrument is working properly.

Exclude the above problem re-power the instrument still does not work, please contact your supplier!